



CU2 Global Pty Ltd
The Global Data Conversion Experts



ConvertU2 Technologies
The Data and Software Conversion Experts

Transferring Files to the CU2 Global Secure FTP Site.

Login & Access Application Preparation Guide.

January 2014

© 2013 ConvertU2 Technologies Pty Ltd in conjunction with CU2 Global Pty Ltd. All rights reserved.

ConvertU2, CU2, and 2SQL are either registered trademarks or trademarks of ConvertU2 Technologies Pty Ltd in Australia, the United States and other countries. Access and SQL Server are trademarks of Microsoft Corporation.

Introduction

This document explains the steps required to login to CU2 Global's secured FTP site. This site can be used by both our customers and business partners to upload applications and databases for analysis by CU2 Global Support.

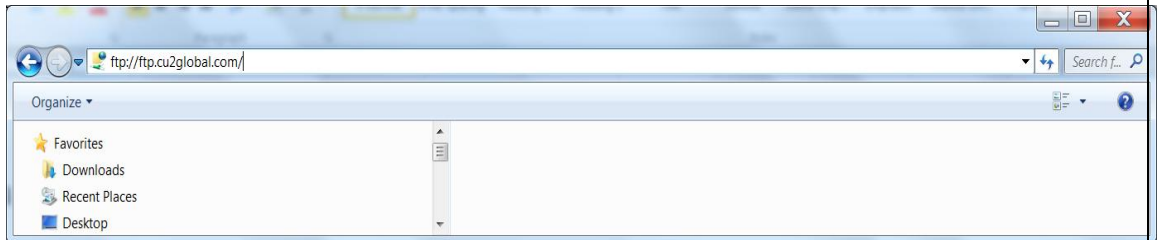
The document also includes a detailed description on how to prepare individual Access Applications for uploading to the FTP site. Please review this information carefully as it will significantly reduce the timeframe prior to CU2 Global delivering its analysis and results to you.

Prior to utilizing the site each client needs to have been allocated an FTP Username and Password which can be obtained by requesting one from CU2 Global at info@cu2global.com.

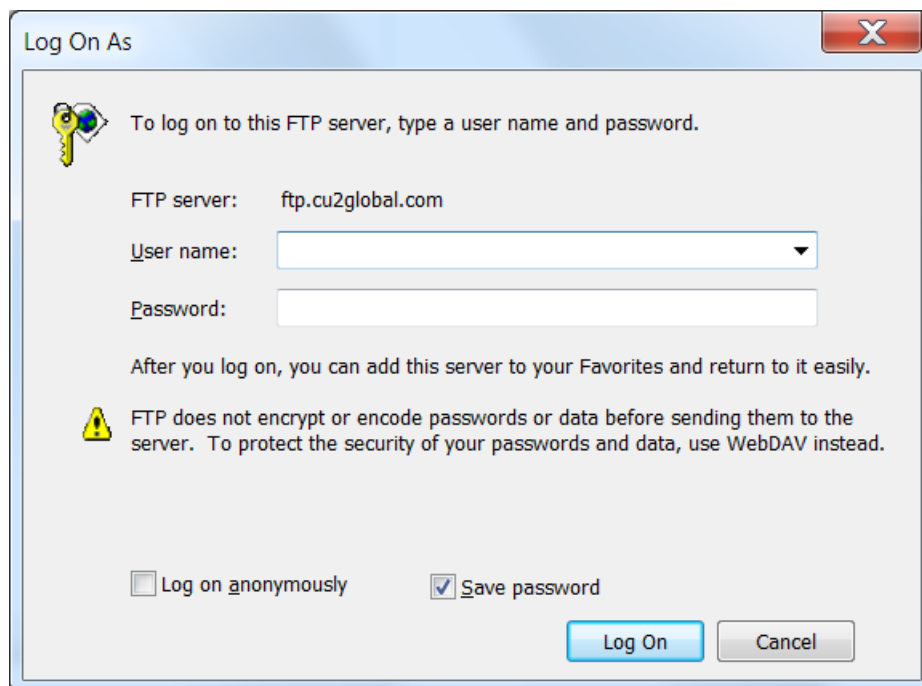
Login to the FTP site using Windows Explorer

How to login using Windows Explorer browser

1. Paste [ftp.cu2global.com](ftp://ftp.cu2global.com) into the Windows Explorer Browser



2. If any error messages occur, click ok on them and then right click in the Windows Explorer Window. The following form will appear:



3. Enter you user name and password provided by CU2 Global, and upload your folders and/or files.

Preparing the Access Application for uploading

In preparing your Access Application for uploading to the CU2 Global secured FTP site please note the following:

Identify Access Application front end and back end.

1. Identify the Microsoft Access front ends, and associated Microsoft Access back ends that you wish to upload to the site. This is what is generally termed and understood to be a Microsoft Access Application.

In simple terms the front end is the database that the users open to enter the data, which may or may not have linked tables to one or more Microsoft Access databases, or back ends.

In the experience of CU2 Global, and in the vast majority of cases, there is only 1 Access front end database and 0 or 1 associated back end Access database.

If there are multiple back end databases associated with an Access front end database then these are homogenous - and only in Access.

We have never experienced an Access Application that has heterogeneous back ends, for example an Access back end and a SQL Server back end associated with a common Access front end database. Nor have we encountered multiple associated non-Access back end databases, two SQL Server back end databases for example.

Ensure Access Database is prepared correctly.

2. It is important that you prepare the Access database as detailed in the section entitled "Preparing your Access Database" of the 2SQL Detective Quick Start Guide. You can obtain a copy of the [2SQL Detective Quick Start Guide here](#).

What to do if you have a SQL Server back end.

3. If your Microsoft Access front end is already connected/linked to a SQL Server database, backup the SQL Server database from a Windows Authentication login, and include this backup file as part of the upload to the FTP site.

Do not use SQL Server Authentication because this can introduce security problems when the SQL Server database is restored to another SQL Server instance as we are required to do during our examination of your application.

Note: That this is a different requirement from the case if you were running the 2SQL Detective in house on such an Access front end database. In this instance you would NOT include a back up of the SQL Server back end in the folder that the 2SQL Detective would be directed to work with. All that is required is to ensure that the linked tables in your Access front end database are functioning correctly.

Upload each individual Access Application in separate zip files.

Include Text file(s) with any relevant information in uploads.

4. If you have been requested, or plan to send, more than one Microsoft Access Application (a combination of one front end with its back end(s) if it exists or without it if it does not), then please ensure that each application is uploaded as a separate zip file.
5. Provide a text file as part of the upload to explain anything that you would consider to be not so obvious or any other information that is relevant, such as passwords